

# **Organization and Relationships Supporting Land-Grant University Agricultural Research Programs**

**Darrell W. Nelson, Dean  
Agricultural Research Division  
University of Nebraska**

**IANR**



# LAND-GRANT SYSTEM

---

The land-grant system is a term used to describe the set of U.S. state and territorial institutions of higher learning which receive federal support for integrated programs of agricultural teaching, research and extension in agriculture, food and environmental systems.

- Morrill Act of 1862 - provided grants of federal lands to states and territories agreeing to establish a public institution for teaching of agriculture and the mechanical arts.



# LAND-GRANT SYSTEM

---

- Morrill Act of 1890 - provided federal support for the establishment of institutions, primarily for agricultural education of African Americans, in the then-segregated Southern states.
- Hatch Act of 1887 - authorized federal support for agricultural research at the state and territorial level and the establishment of Ag Experiment Stations at each land-grant institution.

IANR



# LAND-GRANT SYSTEM

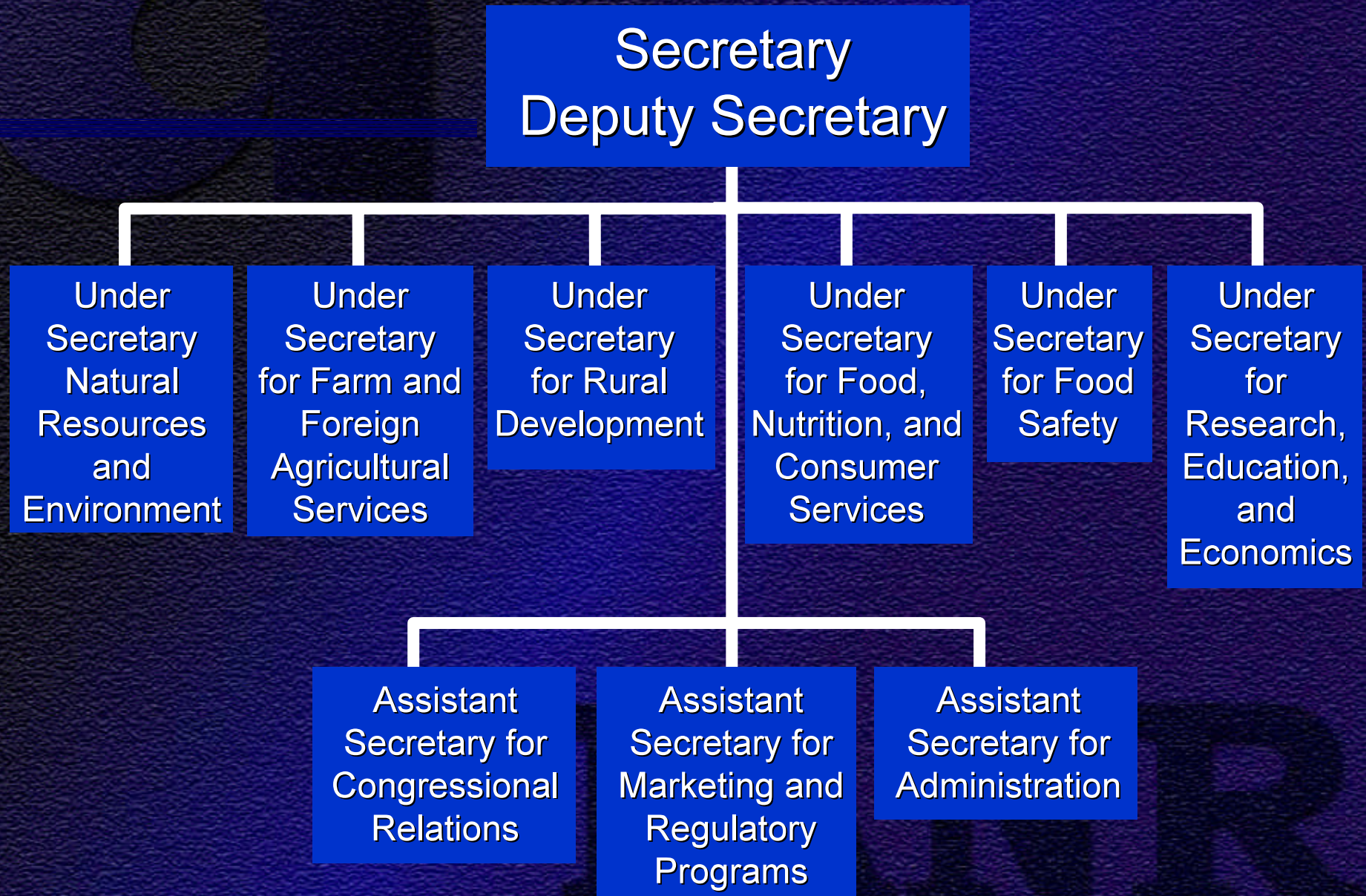
---

- Smith-Lever Act of 1914 - authorized federal support for extension services at state and territorial level and establishment of a Cooperative Extension Service at each land-grant university.
- Equity in Educational Land-Grant Status Act of 1994 - authorized land-grant status to 29 tribal colleges.

IANR



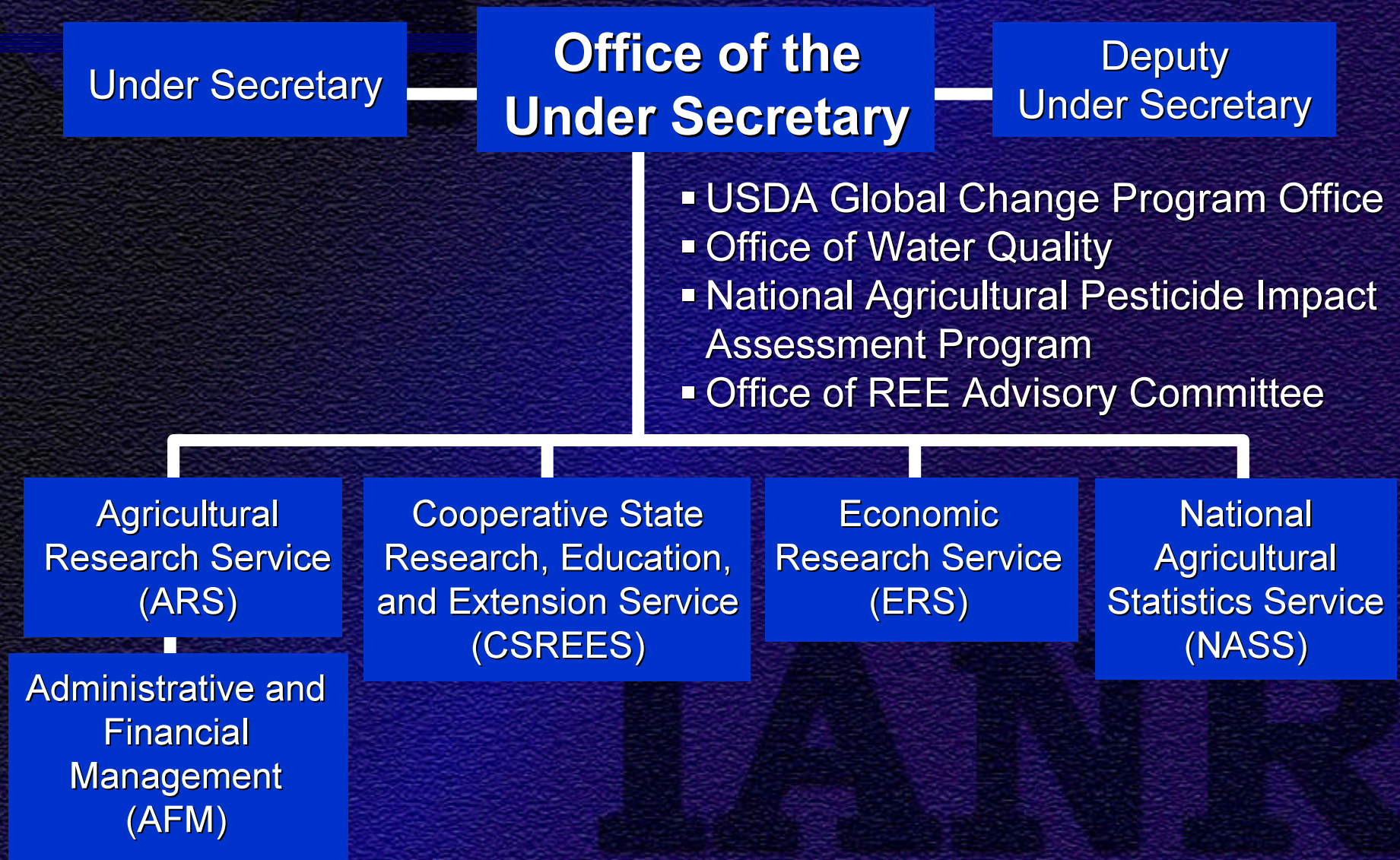
# U.S. Department of Agriculture





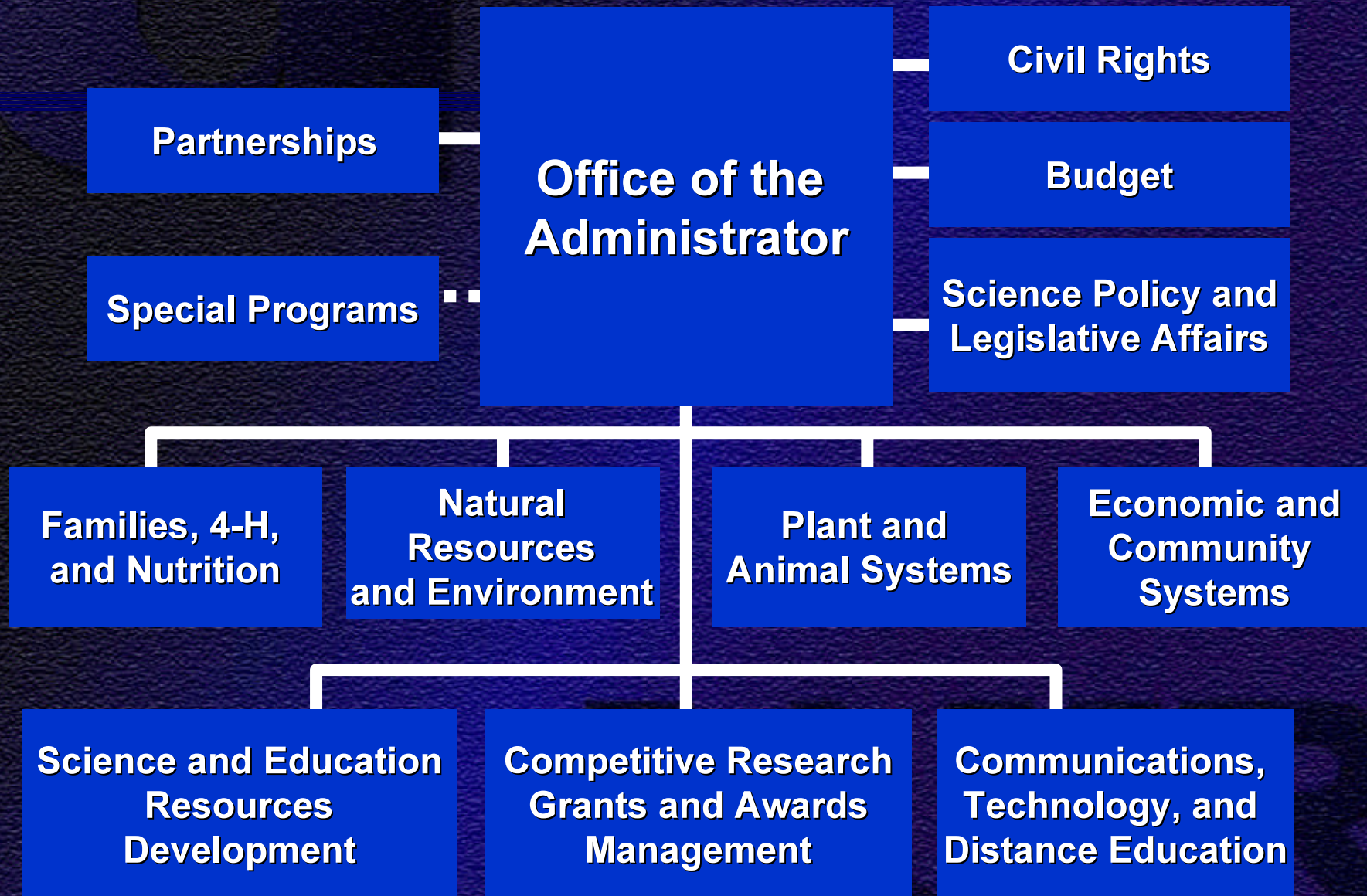
# USDA Mission Area

## Research, Education, and Economics





# CSREES Organization Chart





# CSREES MISSION

---

In cooperation with their partners and customers, CSREES provides the focus to advance a global system of research, extension and higher education in the food and agricultural sciences and related environmental and human sciences to benefit people, communities and the Nation.

IANIGLA



# CSREES FACTS

---

CSREES links the research and education programs of the U.S. Department of Agriculture and works with:

- Land-grant institutions in each state, territory and the District of Columbia
- More than 130 colleges of agriculture; 59 agricultural experiment stations, and 57 cooperative extension services
- 63 schools of forestry
- 17 historically black 1890 land-grant institutions including Tuskegee University



# CSREES FACTS

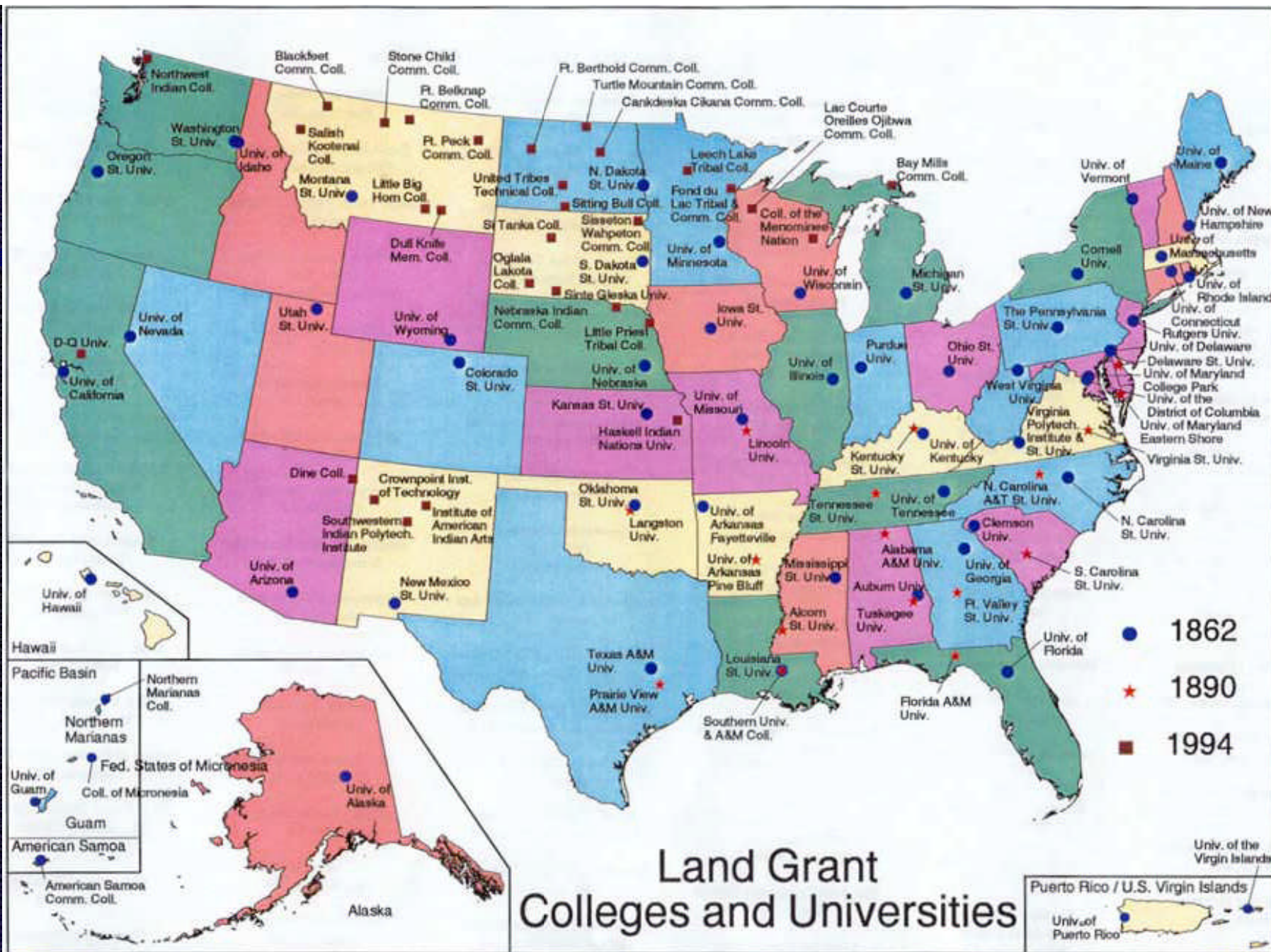
---

CSREES links the research and education programs of the U.S. Department of Agriculture and works with:

- 27 colleges of veterinary medicine
- 42 schools and colleges of human sciences
- 29 Native American 1994 land-grant institutions
- 190 Hispanic-serving institutions

IANIR





U.S. Department of Agriculture  
Natural Resources Conservation Service  
Resource Assessment Division  
Washington, D.C. February 2001

Map ID: m2783  
For Proper interpretation, see Explanation of  
Analysis for this map at our web site. Search  
for "USDASOTL" to locate our map index.

Source: U.S. Department of Agriculture  
Cooperative State Research, Education, and Extension Service  
Washington, D.C.





# CSREES-ADMINISTERED RESEARCH PROGRAMS

---

- Base programs (formula funds)
- National Research Initiative
- National special grants (IPM, global change, minor crop pest mgmt., etc)
- State-specific special grants
- Other research (SARE, aquaculture centers, critical ag materials, etc)
- Integrated Activities (water quality, food safety, PIAP, etc)
- Initiative for Future Agricultural and Food Systems



# NATIONAL ASSOCIATION OF STATE UNIVERSITIES AND LAND-GRANT COLLEGES (NASULGC)

- A higher education association whose membership comprises 212 major U.S. public research universities including all U.S. land-grant institutions.
- Founded in 1887, NASULGC is the nation's oldest higher education association.

IANIR



# NATIONAL ASSOCIATION OF STATE UNIVERSITIES AND LAND-GRANT COLLEGES (NASULGC)

- Dedicated to supporting excellence in teaching, research and public service, NASULGC has been in the forefront of educational leadership nationally for more than a century.
- Composed of Washington, D.C.-based staff and programs organized around several Councils and Commissions.

IANTR



# COMMISSION ON FOOD, ENVIRONMENT AND RENEWABLE RESOURCES (CFERR)

CFERR focuses on broad cross-cutting issues in research, teaching and extension related to agriculture, food, forestry, human sciences, natural resources, oceans and atmosphere, and veterinary medicine.

- Board on Agriculture
- Board on Human Sciences
- Board on Natural Resources
- Board on Oceans and Atmosphere
- Board on Veterinary Medicine



# BOARD ON AGRICULTURE (BA)

---

- Board on Agriculture Assembly
- BA Policy Board of Directors
- Administrative Heads of Agriculture Section (AHS)
  - Council for Agricultural Research, Extension and Teaching (CARET)
- Academic Programs Section (APS)
  - Academic Programs Committee on Organization and Policy (ACOP)

IANTR



# BOARD ON AGRICULTURE (BA)

---

- Cooperative Extension Section (CES)
  - Extension Committee on Organization and Policy (ECOP)
- Experiment Station Section (ESS)
  - Experiment Station Committee on Organization and Policy (ESCOP)
- International Agriculture Section (IAS)
  - International Committee on Organization and Policy (ICOP)

IANTR



# ESCAP CORE COMMITTEES

---

- Budget and Legislative Committee
- Advocacy and Marketing Committee  
(1 subcommittee)
- Science and Technology Committee  
(9 subcommittees)
- Partnerships Committee  
(1 subcommittee)
- Planning Committee
- Executive Committee  
(7 subcommittees)



# REGIONAL ASSOCIATIONS

---

- Association of 1890 Research Directors (ARD)
- North Central Association of Agricultural Experiment Station Directors (NCRA)
- Northeastern Regional Association of State Agricultural Experiment Station Directors (NERA)
- Southern Association of Agricultural Experiment Station Directors (SAAESD)
- Western Association of Agricultural Experiment Station Directors (WAAESD)



# NORTH CENTRAL ASSOCIATION OF AGRICULTURAL EXPERIMENT STATION DIRECTORS

---

- Three to four members per state
- Executive Director and administrative assistant based at the University of Wisconsin
- Meets three times per year
- Manages regional research programs
- Is proactive regarding policy issues related to appropriations, strategic planning, partnership activities, regional competitive grant programs and special initiatives.

IANTR



# APPENDICES

---

- A [glossary of terms](#) for the land-grant system and related organizations
- “[Alphabet Soup](#)” - a listing of commonly used acronyms
- “[URL Alphabet Soup](#)” - a listing of useful web sites

IANIR